



SD-WAN Solution

Taking NU-6000 as the main model



What is SD-WAN?



SD-WAN is a mechanism that can bind any combination of outbound connection or VPN tunnels into a unified control. As long as the tunnel can independently connect to others remotely, it can be combined freely and weighted differently according to users' needs.

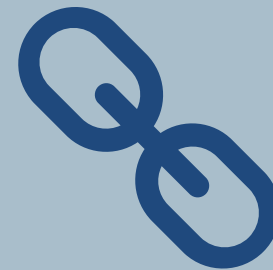


Advantages of SD-WAN



Save money

- MPLS normally costs a lot, especially when the environments require a lot of lines.



High integration

- Can combine multiple connections through the mechanism of SD-WAN
- Be able to customize the weights for each connections
- Easy deployment and central management.

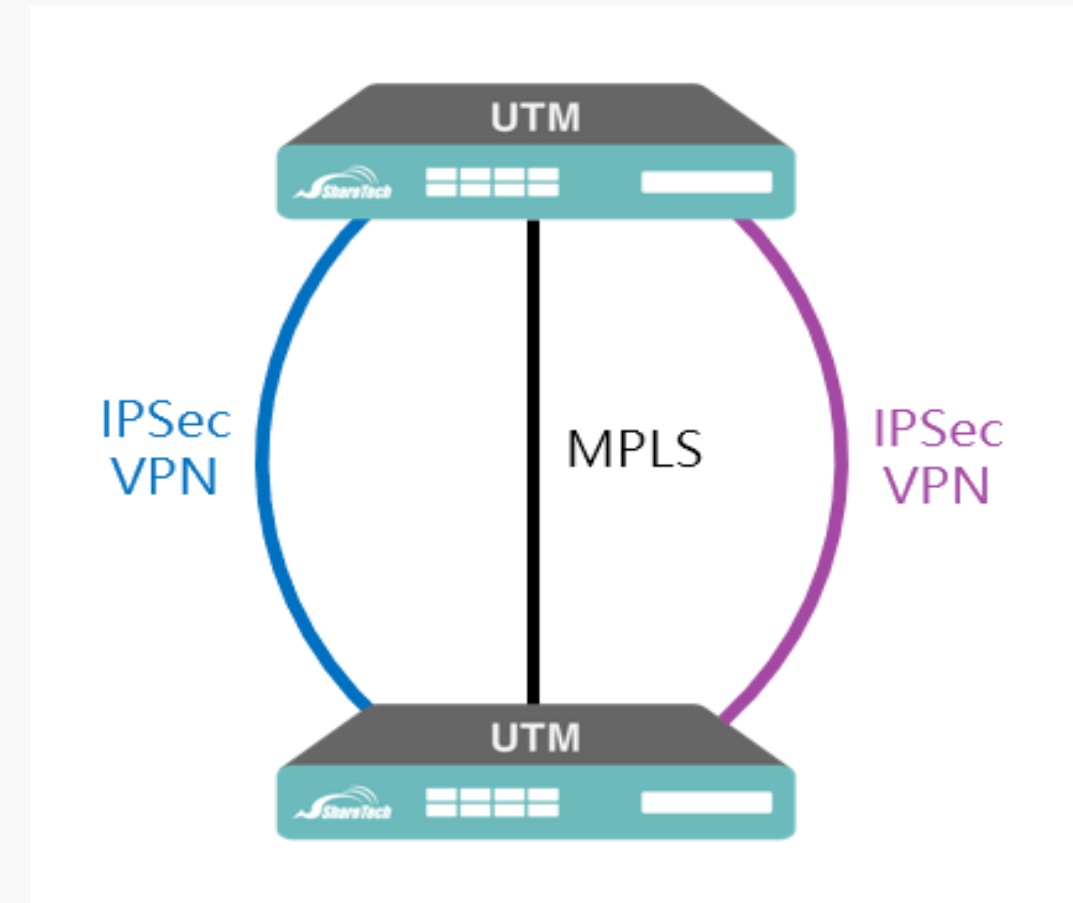


No limit on quantity of IPSec

- Increase bandwidth
- Reduce network congestion and packet loss

Scenario 1

What if the MPLS is needed but the redundancy is also required?

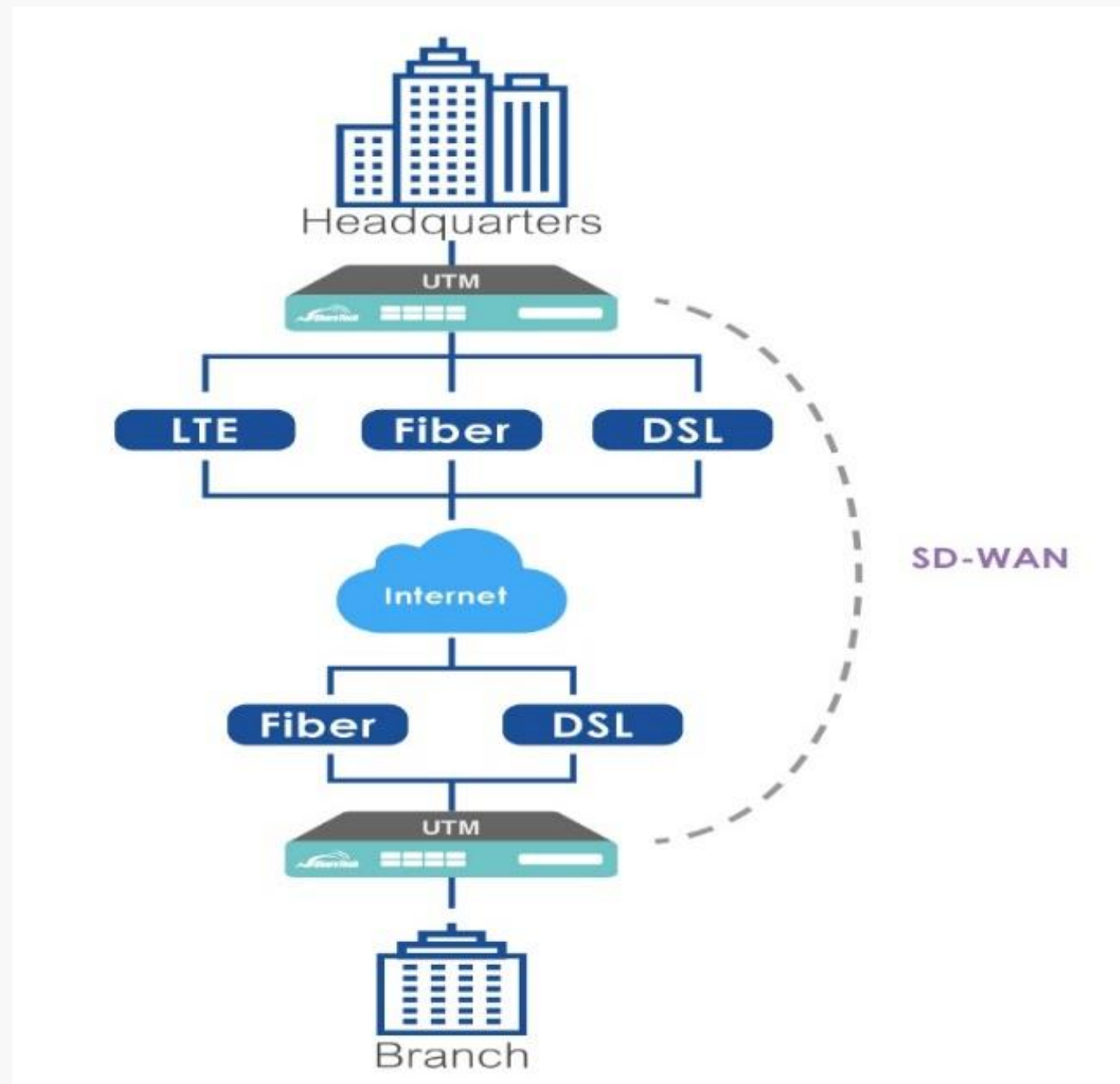


- Using two IPSec as MPLS backups. If any line is disconnected, it will automatically switch to another line to maintain a smooth connection.
- Dual IPSec can also do the load balance.

IPSec VPN

Scenario 2

Two UTM are in different places,
how can the client get them connected?

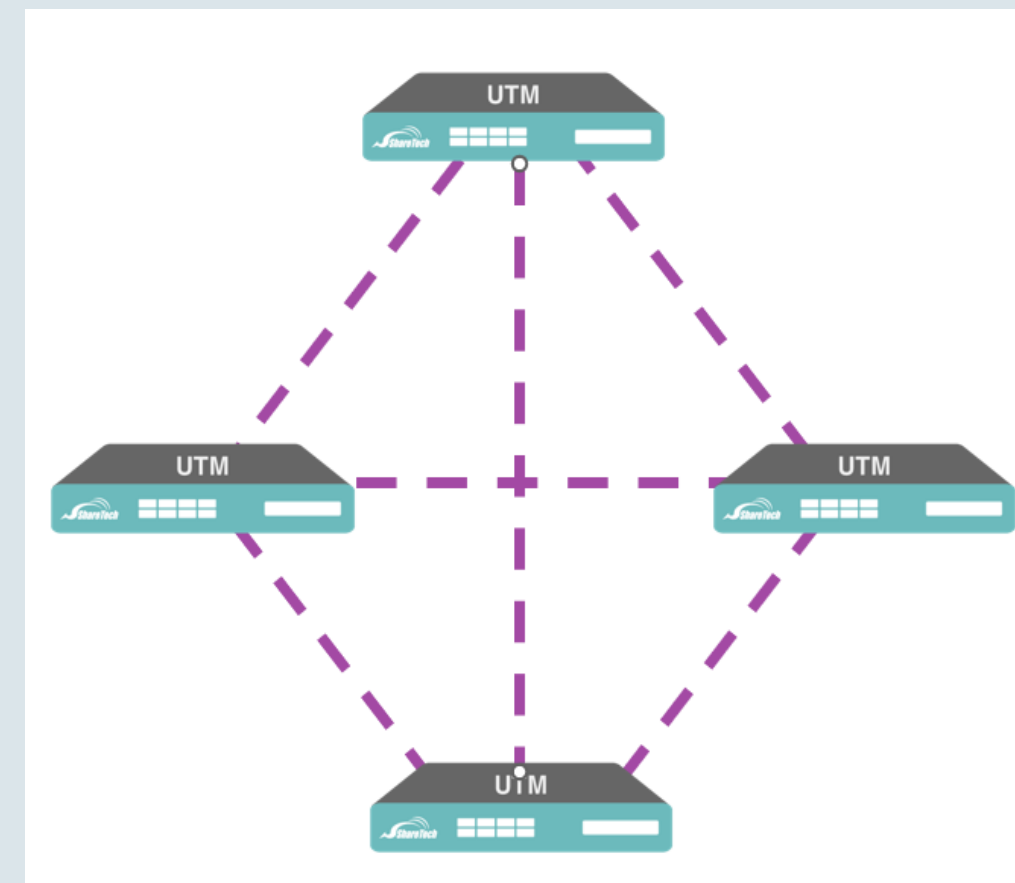


Integrate multiple lines

- No need to set up complex lines so that the administrators can easily manage.
- Integrate multiple lines from A to B.
- Much cheaper than using MPLS to connect them all

Connect multiple UTM using the SD-WAN technique

- Not only two, SD-WAN can be applied to connect multiple UTM and effortlessly connect them together.



Scenario 3

How to solve the problem of bandwidth and connection congestion caused by single line?

▶ Add SD-WAN :

Group Name

SD-WAN

| Weight | IPSec Tunnel | Weight | Gateway |
|-------------------------------------|---|-------------------------------------|--|
| <input type="checkbox"/> | <div>1</div> test vpn (60.249.5.0/24 -- 192.168.1.0/24) | <input checked="" type="checkbox"/> | <div>1</div> wan189 (192.168.189.1) (zone2 (wireless)) |
| <input type="checkbox"/> | <div>1</div> yyyy (192.168.100.0/24 -- 192.168.1.0/24) | <input type="checkbox"/> | <div>1</div> WAN221 (192.168.189.1) (zone2 (wireless)) |
| <input type="checkbox"/> | <div>1</div> yyyy (--) | <input type="checkbox"/> | <div>1</div> sharetech (60.249.5.254) (zone2 (wireless)) |
| <input checked="" type="checkbox"/> | <div>1</div> tunnel (--) | <input type="checkbox"/> | <div>1</div> test(ppp4001) () (ppp4001 (test)) |

- Each link can be assigned different weights, enabling the selection of the optimal path for packet transmission.
- Reduce connection congestion and facilitates effective load balancing.

Used as SD-WAN Model

NU-6000

Software Spec

- Antivirus engine
- Basic firewall protection
- Safety gateway
- Traffic analysis



Hardware Spec

- 6 Gigabit Ports (5 Customed)
- LAN BYPASS
- Storage 32G eMMC
- Memory 4G
- NAT Transmission up to 4 Gbps

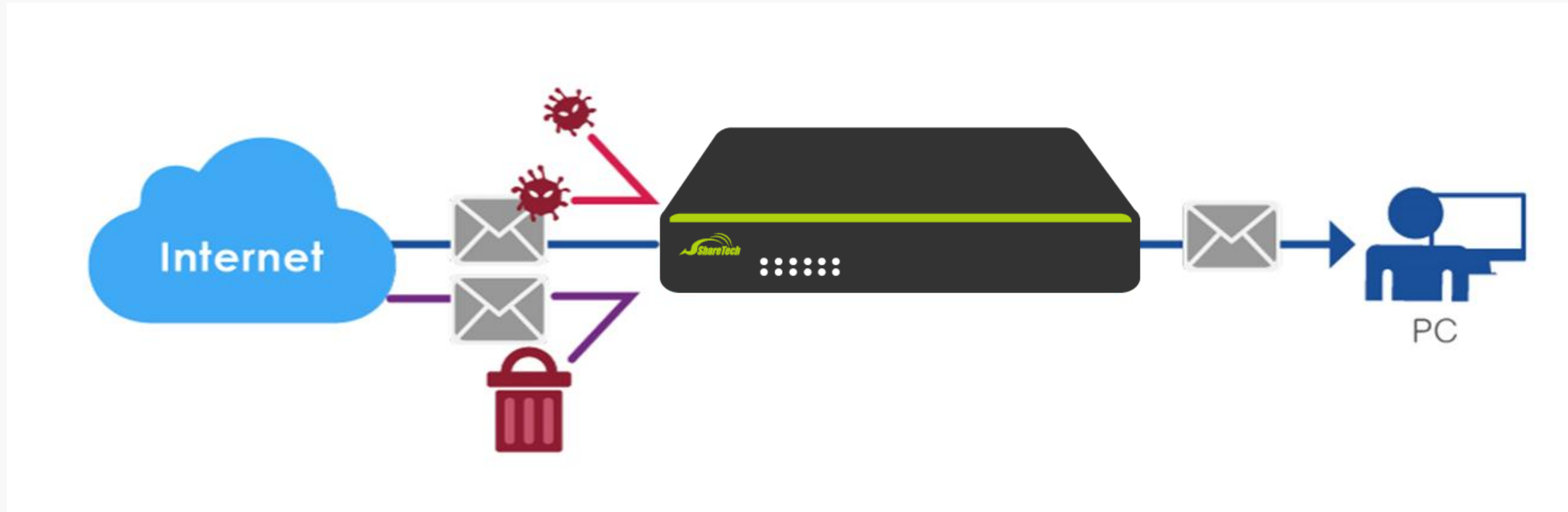
Specialties

NU-6000 is a small firewall that supports VPN and SD-WAN mechanisms, providing protection for various branch locations while enabling simple, centralized management. It offers businesses a cost-effective way to manage and secure their networks.

Comprehensive VPN

- IPSec
- PPTP
- L2TP
- SSL VPN

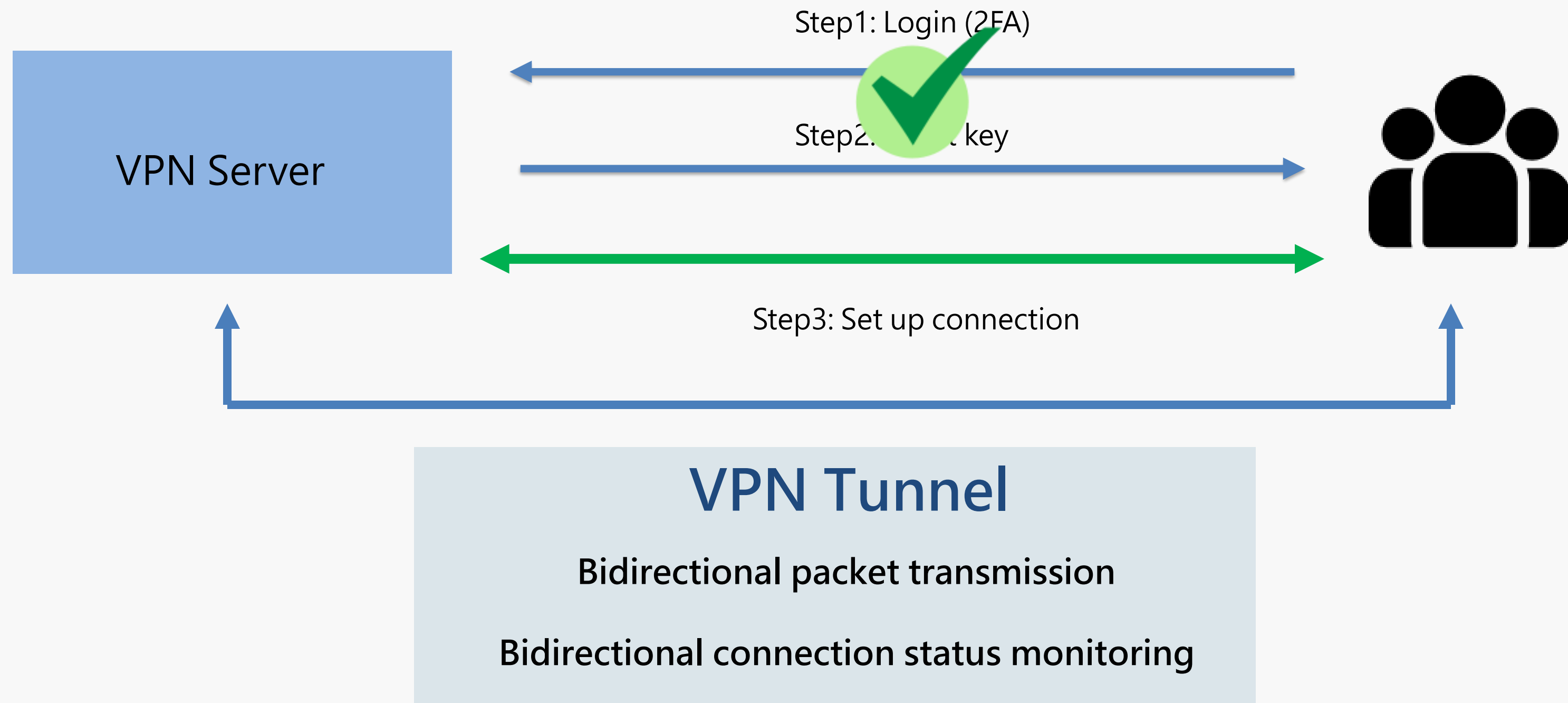
Feature1 Anti-Virus Engine



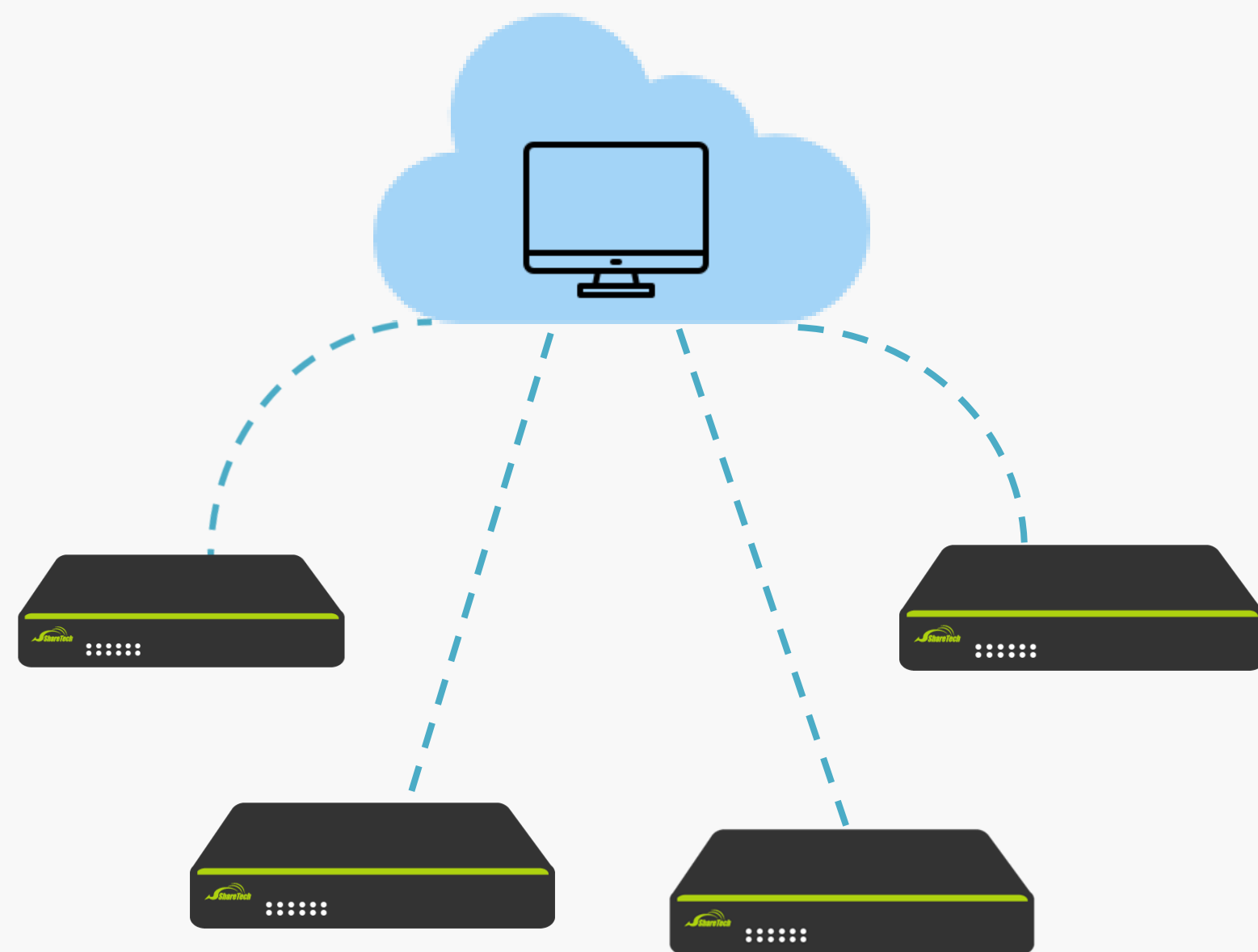
- The anti-virus engine in NU-6000 is capable of detecting over millions of viruses, worms, and Trojans.
- Automatically scans emails for viruses and updates virus base via the internet, giving strong protection to the devices.

Feature2 VPN

- Adopting Zero Trust Architecture and establish secure connections using authentication mechanisms.
- When the connection is lost, the server will remove the channel key, and the client must re-authenticate to obtain a new key to re-establish the connection.



Feature3 Central Management



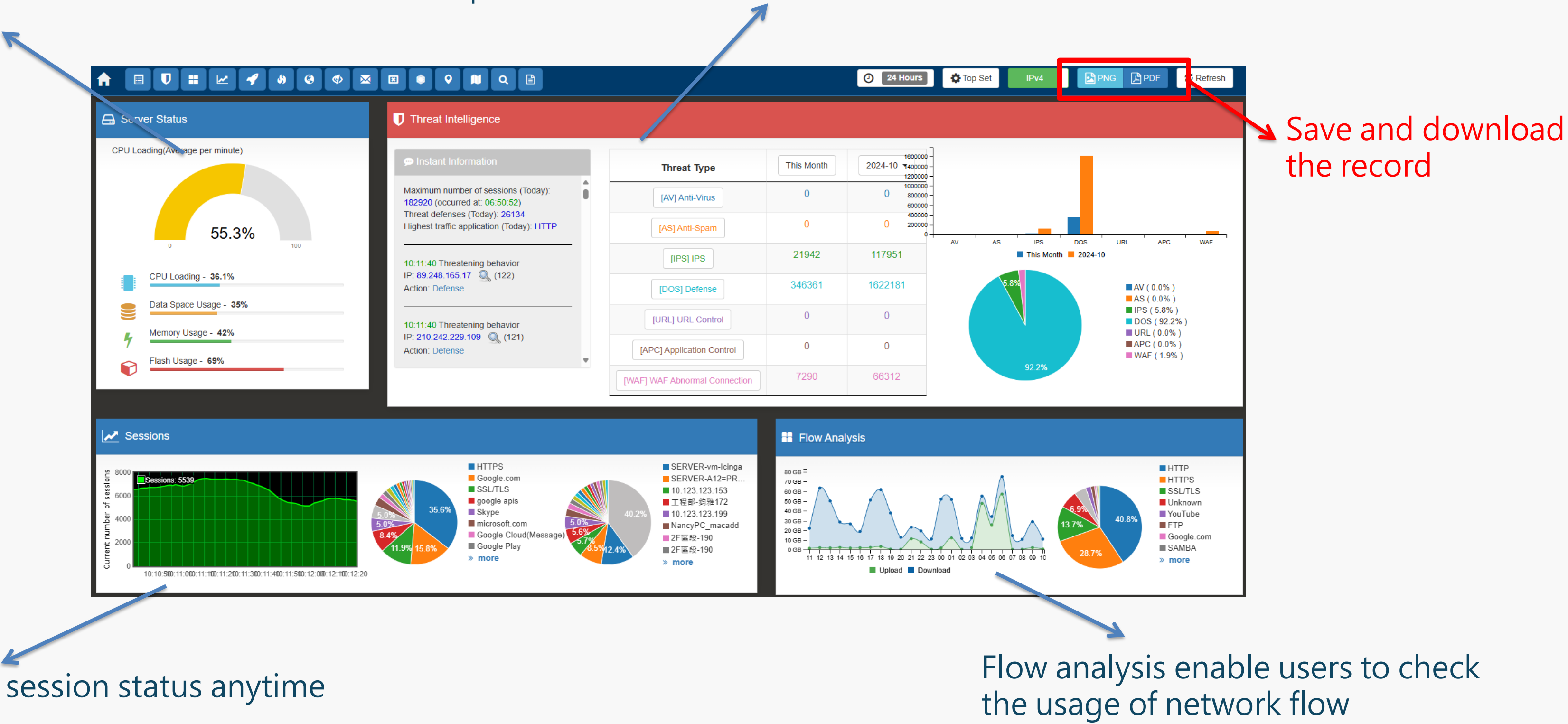
| <div>FreeDealerVIP</div> <div>Search<input type="text"/></div> | | | |
|--|-----------------------|--|---|
| Status ▾ | Device Name | Info | Group Tags |
| <div></div> | UN-850C 1122334455 | <div><div></div><div>BK1</div><div></div><div></div></div> | <div>SCHOOL</div> <div><div></div><div></div></div> |
| <div></div> | UN-870H 1155889944 | <div><div></div><div>BK1</div><div></div><div></div></div> | <div>FACTORY</div> <div><div></div><div></div></div> |
| <div></div> | UN-870C 2244113399 | <div><div></div><div>BK1</div><div></div><div></div></div> | <div>ENTERPRISE</div> <div><div></div><div></div></div> |

- EyeCloud platform provides the functions of remote monitoring, activating, rebooting, and managing multiple devices in different branches.

Feature 4 Dashboard

Visualize the data for users to see the real time operation

Categorize threats into seven different types for users to view the security strategies





Thank you

