



**Transportation**



**UTM**



**FinTech**



**Networking**



**AIoT**



**Industrial Automation**



**Server**



**Medical**



**Automotive**



**Gaming**



# Industrial & Enterprise SSD



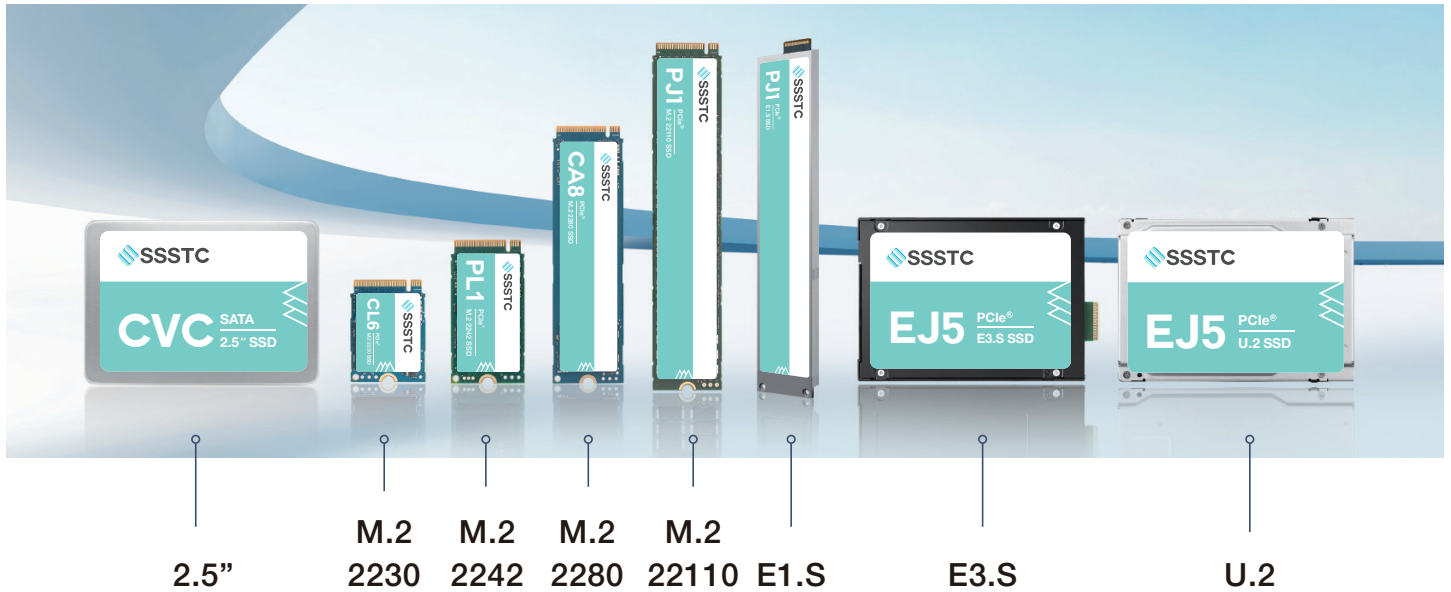
**SOLID STATE STORAGE TECHNOLOGY CORP.**

a subsidiary of **KIOXIA.**

# Interfaces and features

## SATA SSD

## NVMe™ SSD



2.5"

M.2  
2230

M.2  
2242

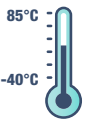
M.2  
2280

M.2  
22110

E1.S

E3.S

U.2



### Wide temperature (I-temp)

Industrial-grade SSDs offer wide temperature range and automatic control, ensuring stable operation from -40°C to 85°C.



### TruePLP

Power Loss Protection is the all-important mechanism to protect data stored in an SSD during a sudden power outage, which is critical in an SSD's reliability.



### Pseudo SLC (pSLC)

This technology simulates TLC as an SLC cell structure to enhance SSD performance, allowing for a greater P/E (Program/Erase) cycle of 50,000, and improving endurance.



### TCG-OPAL / AES 256

TCG Opal offers hardware-based encryption, ensuring robust data protection against unauthorized access or tampering.



### DWPD ≥ 1

An SSD with a DWPD (Drive Writes Per Day) value of 1 or greater is typically suited for environments that demand high write intensity.



### Long-term CoS

Leading Performance and Long-Term Assurance, Paving the Way for Maximum Business Growth and Sustainability.



### E2E Protection

End-to-end data protection enhances data safety, offering robust security, integrity, and reliability.



### Configurable OP

Configurable OP to tailor the SSD for your specific application's performance and endurance needs.



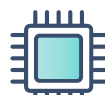
### Direct Write

Direct Write writes data straight to TLC NAND without SLC caching to ensure sustained, consistent write performance under heavy workloads.



### TrueLog 360

TrueLog 360 is an exclusive, comprehensive logging feature of SSSTC that captures and records critical drive data every hour throughout the entire lifecycle of the SSD.



### NAND Generation Change

100% originally packaged NAND flash memory from KIOXIA, ensuring high quality and superior performance in all SSD products.



### Power Loss Notification (PLN)

PLN alerts the SSD of imminent power loss, allowing rapid cache flush and metadata updates to ensure data integrity without additional hardware protection.

# Enterprise SSD

## SATA 2.5" / M.2 2280



TruePLP



TruePLP

Series	ER3
Interface	SATA 6 Gb/s
Form Factor	M.2 2280/ 2.5"
Capacity	240GB - 3840GB
Sequential Read/Write(Max)	520/520 MB/s
4K Random Read/Write(Max)	90K/45K IOPS
MTBF	3 million hours
DWPD (5 years)	DWPD≥1(3DWPD optional*)
Operating Temperature	0°C to 70°C
Features	
VMware Ready™	●
AES-256	●
End-to-End Protection	●
TruePLP	●
TCG Enterprise	●
Other features	Immersion cooling support

Series	ER4
Interface	SATA 6 Gb/s
Form Factor	2.5"
Capacity	8TB / 16TB
Sequential Read/Write(Max)	550/530 MB/s
4K Random Read/Write(Max)	98K/55K IOPS
MTBF	3 million hours
DWPD (5 years)	DWPD=1
Operating Temperature	0°C to 70°C
Features	
VMware Ready™	●
AES-256	●
End-to-End Protection	●
TruePLP	●
TCG Enterprise	●
Other features	Up to 16TB capacity

## NVMe™ M.2 2280/ M.2 22110 / U.2 / E1.S / E3.S



TruePLP



TruePLP



TrueLog 360



Gen4	
Series	PJ1
Interface	PCIe® NVMe™ Gen4x4
Form Factor	M.2 2280/ M.2 22110 / U.2 / E1.S
Capacity	480GB - 7680GB
Sequential Read/Write(Max)	7,000/4,200 MB/s
4K Random Read/Write(Max)	900K/160K IOPS
MTBF	3 million hours
DWPD (5 years)	DWPD≥1(3DWPD optional*)
Operating Temperature	0°C to 70°C
Features	
VMware Ready™	●
AES-256	●
End-to-End Protection	●
TruePLP	●
TCG Opal	●
Other features	TruePLP

Gen5	
Series	EJ5
Interface	PCIe® NVMe™ Gen5x4
Form Factor	U.2 / E3.S
Capacity	3,200GB - 15TB
Sequential Read/Write(Max)	14,000/7,500 MB/s
4K Random Read/Write(Max)	2,500K/400K IOPS
MTBF	3 million hours
DWPD (5 years)	DWPD≥1(3DWPD optional*)
Operating Temperature	0°C to 78°C
Features	
VMware Ready™	●
AES-256	●
End-to-End Protection	●
TruePLP	●
TCG Opal	●
Other features	Gen5/TrueLog 360

Gen5	
Series	CX3
Interface	PCIe® NVMe™ Gen5x4
Form Factor	M.2 2280
Capacity	480GB - 1920GB
Sequential Read/Write(Max)	14,000/12,000 MB/s
4K Random Read/Write(Max)	2,000K/1,600K IOPS
MTBF	3 million hours
DWPD (5 years)	DWPD<1
Operating Temperature	0°C to 85°C
Features	
TrueLog 360	●
AES-256	●
End-to-End Protection	●
PLN	●
TCG Opal	●
Other features	Gen5

●=Support ○=N/A ◐=Optional \*different SKU | SSSTC reserves the right to modify or update any specifications or information listed on this page without prior notice. All product information and technical specifications are for reference only, and actual product specifications may vary based on current availability.

# Industrial SSD

## SATA 2.5" / M.2 2242 / 2280



Series	CVC	CVC(pSLC)
Interface	SATA 6 Gb/s	SATA 6 Gb/s
Form Factor	M.2 2242 / M.2 2280 / 2.5"	M.2 2242 / M.2 2280 / 2.5"
Capacity	128GB - 2TB	40GB - 640GB
Sequential Read/Write(Max)	550/510 MB/s	550/510 MB/s
4K Random Read/Write(Max)	65K/75K IOPS	65K/75K IOPS
MTBF	3 million hours	3 million hours
Standard Temp	0°C to 85°C	0°C to 85°C
Extended Temp	-25°C to 85°C	-25°C to 85°C
Industrial Temp	-40°C to 85°C	-40°C to 85°C
<b>Features</b>		
AES-256	●	●
End-to-End Protection	●	●
TruePLP	○	○
TCG Opal	○	○
Other features	Low power consumption	Pseudo SLC/Low power consumption

Series	CVD
Interface	SATA 6 Gb/s
Form Factor	M.2 2280 / 2.5"
Capacity	128GB - 2TB
Sequential Read/Write(Max)	530/500 MB/s
4K Random Read/Write(Max)	50K/75K IOPS
MTBF	3 million hours
Standard Temp	0°C to 85°C
Extended Temp	N/A
Industrial Temp	N/A
<b>Features</b>	
AES-256	●
End-to-End Protection	●
TruePLP	○
TCG Opal	○
Other features	Direct Write

Series	PV1
Interface	SATA 6 Gb/s
Form Factor	M.2 2280 / 2.5"
Capacity	480GB - 4TB
Sequential Read/Write(Max)	520/520 MB/s
4K Random Read/Write(Max)	90K/80K IOPS
MTBF	3 million hours
Standard Temp	0°C to 85°C
Extended Temp	N/A
Industrial Temp	N/A
<b>Features</b>	
AES-256	●
End-to-End Protection	●
TruePLP	○
TCG Opal	○
Other features	Sulfur resistance

## NVMe™ M.2 2230 / 2242 / 2280



Series	Gen3 PL1	Gen3 PL1(pSLC)
Interface	PCIe® NVMe™ Gen3x4	PCIe® NVMe™ Gen3x4
Form Factor	M.2 2242 / M.2 2280	M.2 2242 / M.2 2280
Capacity	128GB - 4TB	40GB - 1280GB
Sequential Read/Write(Max)	3,100/1,350 MB/s	3,000/1,800 MB/s
4K Random Read/Write(Max)	200K/280K IOPS	200K/280K IOPS
MTBF	3 million hours	3 million hours
Standard Temp	0°C to 85°C	0°C to 85°C
Extended Temp	-25°C to 85°C	-25°C to 85°C
Industrial Temp	-40°C to 85°C	-40°C to 85°C
<b>Features</b>		
AES-256	●	●
End-to-End Protection	●	●
TruePLP	○	○
TCG Opal	○	○
Other features	Low power consumption	Pseudo SLC

Series	Gen4 CL6
Interface	PCIe® NVMe™ Gen4x4
Form Factor	M.2 2230 / M.2 2242 / M.2 2280
Capacity	256GB - 2TB
Sequential Read/Write(Max)	6,000/5,300 MB/s
4K Random Read/Write(Max)	900K/900K IOPS
MTBF	3 million hours
Standard Temp	0°C to 85°C
Extended Temp	-25°C to 85°C
Industrial Temp	-40°C to 85°C
<b>Features</b>	
AES-256	●
End-to-End Protection	●
TruePLP	○
TCG Opal	○
Other features	Multiple Form Factors

Series	Gen4 PQ2
Interface	PCIe® NVMe™ Gen4x4
Form Factor	M.2 2230 / M.2 2242 / M.2 2280
Capacity	512GB - 2TB
Sequential Read/Write(Max)	7,000/6,000 MB/s
4K Random Read/Write(Max)	1,000K/1,000K IOPS
MTBF	3 million hours
Standard Temp	0°C to 85°C
Extended Temp	N/A
Industrial Temp	N/A
<b>Features</b>	
AES-256	●
End-to-End Protection	●
TruePLP	○
TCG Opal	○
Other features	QLC NAND

Series	Gen5 CA8
Interface	PCIe® NVMe™ Gen5x4
Form Factor	M.2 2280
Capacity	512GB - 4TB
Sequential Read/Write(Max)	14,000/12,000 MB/s
4K Random Read/Write(Max)	2,000K/1,600K IOPS
MTBF	3 million hours
Standard Temp	0°C to 85°C
Extended Temp	N/A
Industrial Temp	N/A
<b>Features</b>	
AES-256	●
End-to-End Protection	●
TruePLP	○
TCG Opal	○
Other features	Gen5

●=Support ○=N/A ○=Optional \*different SKU | SSSTC reserves the right to modify or update any specifications or information listed on this page without prior notice. All product information and technical specifications are for reference only, and actual product specifications may vary based on current availability.



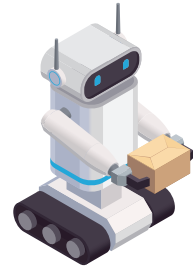
### Industrial Automation

- Industrial PC
- Embedded PC
- Industrial Panel PC
- Rugged PC



### FinTech

- POS
- KIOSK
- ATM
- Digital Signage



### AIoT

- Surveillance
- MFP
- NAS
- Smart City



### Transportation

- Fleet Management
- In-Vehicle PC
- AMR
- Industrial AGV



### Medical

- Medical Imaging
- Nursing Cart
- Bedside Terminal
- Smart Hospital



### Networking

- UTM
- Switch
- Router
- VoIP Media Gateway



### Gaming

- Casino
- Lottery
- Arcade
- Handheld Gaming PC



### Server

- AI Server
- Hyper-Converged Server
- Edge-Server
- HPC Server



A subsidiary of KIOXIA Corporation, Solid State Storage Technology Corporation (SSSTC) is a global leader in the design, development, and manufacturing of digital storage solutions. We offer a comprehensive line up of high-performance customizable SSDs for the Enterprise, Industrial, and Business client markets. With various form factors and interfaces, our SSD solutions help businesses simplify their storage infrastructures accelerating variable workloads, improving efficiency, and reducing total cost of ownership.

### a Wholly-owned subsidiary of KIOXIA Corporation

SSSTC is a wholly-owned subsidiary of KIOXIA Corporation, a global leader in NAND flash memory and SSD solutions. SSSTC leverages KIOXIA's technology and resources to provide high-quality, reliable SSD products.

### Comprehensive SSD lineup

SSSTC offers a comprehensive line-up of SSDs for PC Client, Consumer, Industrial Solutions, Enterprise, and Cloud Computing in a variety of interfaces and form factors to deliver the right product for the right application.

### 100% In-House Taiwan-based manufacturing

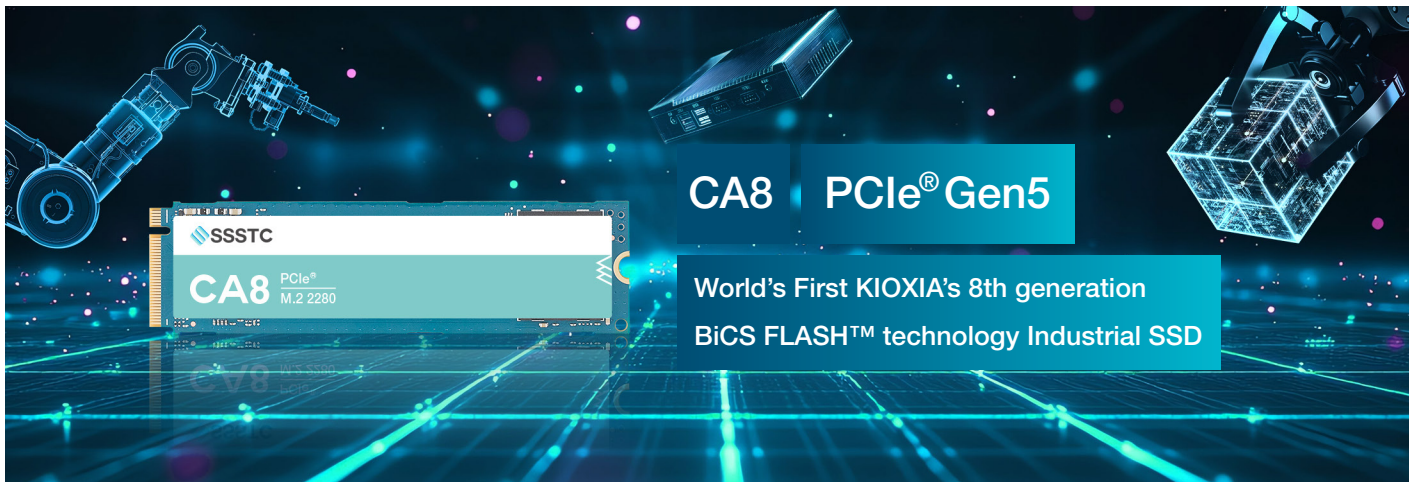
SSSTC's SSDs are 100% manufactured in-house utilizing state-of-the-art facilities in Taiwan. All SSDs are designed and developed 100% in-house via dedicated R&D teams capable of creating highly customizable solutions, including customized firmware using industry-leading key components.

### Strong R&D team and firmware technology

SSSTC owns the source code and firmware for all its SSD products. This gives SSSTC full control over the design and manufacturing of its SSD products, which allows it to provide customized firmware, high-performance, and reliable SSD products.

### 100% SSDs Aging Tested

SSSTC's SSDs are 100% age-tested. This means that each SSD is subjected to a rigorous test regimen to ensure that it can operate reliably under various working conditions.



## Contact information

### Solid State Storage Technology Corporation (Headquarters)

- 📍 12F, 392, Ruey Kuang Road, Neihu, Taipei 114, Taiwan, R.O.C
- ✉ [www.ssstc.com/contact](http://www.ssstc.com/contact)
- ☎ +886-2-8798-2886
- 📞 +886-2-5581-0868



Learn more at [www.ssstc.com](http://www.ssstc.com)